

CONSTRUCTION UPDATE



Whakawatea ceremony taking place on Arawhiti ki Ōkahu and the southern section of Ara Tūhono.
Insert: Hōkai Nuku kaumatua on their way to the ceremony

Southern Connection open to traffic

The traffic switches at the southern connection of Ara Tūhono - Pūhoi to Warkworth motorway project are now complete and the public can drive northbound and southbound on State Highway 1 across Arawhiti ki Ōkahu (the Ōkahu viaduct).

This is an exciting stage in our work to connect the new motorway to the existing State Highway 1 and is one of a series of significant road layout changes scheduled to take place in 2022. A huge amount of work took place in the lead up to the switch which included various road closures and stop/go traffic management, so we'd like to acknowledge the impact this had on road users and we are grateful for their understanding during this time.

To mark the occasion, Hōkai Nuku invited NX2 and Waka Kotahi NZ Transport Agency to attend the whakawatea ceremony to make the pathway safe for road users of

Arawhiti ki Ōkahu and the southern section of Ara Tūhono which will provide road users with a scenic new route on their journey across State Highway 1.

Hōkai Nuku Chairman, Mook Hohneck said that the southern section of Ara Tūhono is significant to mana whenua as the alignment passes through the occupation areas of our tupuna/ancestors. The artwork of 15 silhouettes sits north of Arawhiti ki Ōkahu and acknowledges our tupuna and that we are still here today. "It was a great celebration for mana whenua with our Tiriti o Waitangi partners. The artworks are a visible reminder of our cultural footprint on a road of significance."

We are thrilled to be able to share this progress, but we remind everyone that safety is our highest priority, and the reduced speed limits will be in place until the rest of the project opens next year. While we will try to limit disruption to traffic, road users should plan ahead and allow more time for their journey.

Upcoming State Highway 1 overnight road closures at Pukerito (Northern Connection)

Pavement reconstruction and resurfacing works on SH1 between Hudson Road and Kiapara Flats Road started in May. We need to continue this work in July and again in September so we can switch the traffic around the Pukerito (Northern Connection). Please keep an eye out for dates of these overnight road closures and detours. Work at this time of year is very weather dependant, so timings may change at short notice. If you want to keep up to date, you can follow the projects Facebook page @aratuhonopuhoitowarkworth, website: nx2group.com or check out the [Waka Kotahi Journey Planner](#).

One piece of the puzzle

Waka Kotahi NZ Transport Agency is working hard to improve the safety and resilience of State Highway 1 and the Pūhoi to Warkworth project is just one piece of the puzzle. For those who travel on SH1 between Auckland and Northland, it's hard to miss the road cones, temporary speed limits and stop/go signs but this is all part of something bigger.

Each crew is part of a wider project team, and each worker is just one of the many in the road crews currently working on the four major SH1 projects between Auckland and Northland - Pūhoi to Warkworth, Dome Valley safety improvements, Loop Road safety improvements, and the soon to start Whangārei to Wellsford safety improvements project.

The four projects are big in every way - big investments, big in scale, and big in the improvements they are making. They are big in their impact for anyone who uses the road, both now while under construction and more importantly in the future, when they will continue to serve our children and mokopuna.

You can read more about what we're up to along the Auckland - Northland corridor [here](#)



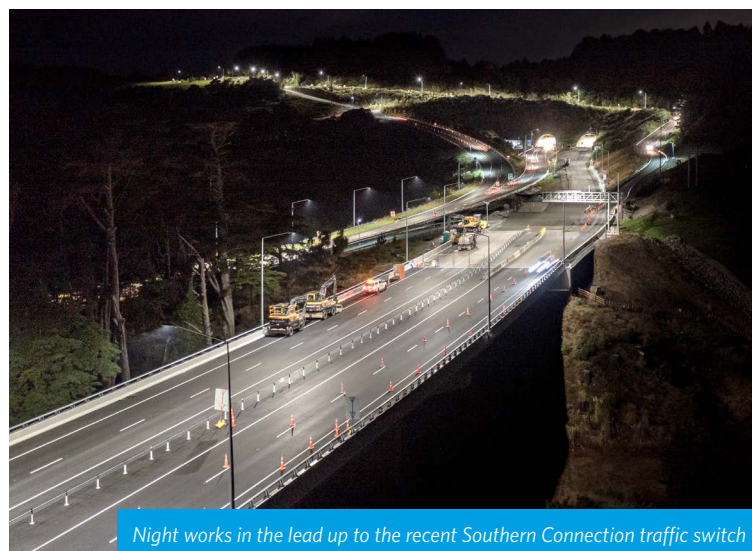
Opening next year

While we cannot confirm an exact opening date, the project team have advised that the road will be completed next year which means the safer, more reliable and resilient route will now open in 2023.

Waka Kotahi, NX2 and Fletcher/Acciona are fully committed to working together to complete the project as soon as possible and look forward to opening the Pūhoi to Warkworth motorway next year. We will provide an update on the exact opening date as soon this has been worked through.

Despite two years of challenging pandemic conditions, we continue to work hard to complete the motorway and good progress has and continues to be made.

You can read more about the opening date update in the Waka Kotahi media release [here](#).





He Huihuinga Rangatira artwork

Several pieces of artwork have been designed and are being handcrafted by Hōkai Nuku appointed artists for the project. We will share more about each piece as they are unveiled across the project site. The first piece was blessed and unveiled at the Friday 20 May ceremony.

He Huihuinga Rangatira are silhouettes of gathering Ariki (paramount leaders). Situated near the Ōkahu inlet are settlement areas that were home to generations of mana whenua (people with jurisdiction over this land), including those who helped the Bohemian settlers to establish. This artwork acknowledges the ancestral footprint of the tūpuna (ancestors) on the land. They are wearing korowai (cloaks) and holding taonga (treasured implements) which acknowledge their status and rank as rangatira (high ranked leader) of the hapū and iwi.

New Flyover

[CLICK HERE](#)

to watch the latest footage of the Ara Tūhono - Pūhoi to Warkworth Motorway project area from May 2022, flying from Warkworth in the North to Pūhoi in the South.



Progress photos

Have a look below at some 'before and after' photos of the Southern and Northern Connection. If you want to see more progress photo's, have a look [here](#).

PUKERITO ROUNDABOUT AT THE NORTHERN CONNECTION



PUKERITO ROUNDABOUT AT THE SOUTHERN CONNECTION



If you do not wish to receive any further newsletters, please [unsubscribe here](#)

A copy of our privacy policy and how we look after the information you provide us is available on our website: www.nx2group.com

E. info@nx2group.com P. 0508 P2WK INFO [f](#) Ara-Tūhono-Pūhoi-to-Warkworth