

CONSTRUCTION UPDATE



Hitting the ground running in 2021

Welcome to our first Construction Update of the year – and what a year it has already been.

We had hoped to fill this edition with photos from our public open day, however COVID-19 had other ideas.

With the Auckland region in Alert Level 2 unfortunately we had to postpone the day we had planned for Saturday 20 February.

We are working on a new date and we will keep you posted.

Meanwhile, we've been hard at work making use of the summer sunshine to finish as much as we can of our earthworks and structures.

With road surfacing underway too, the project is more and more beginning to resemble the final road you'll be driving on next year.

We look forward to giving you a glimpse of the project 'in real life' once our new open day date is confirmed. In the meantime, keep an eye on our [Facebook](#) page, [website](#) and [YouTube](#) channel for our latest drone flyovers – these are some of the best ways to watch our progress.



KAURI VIADUCT BEAMS INSTALLED

Beam installation is now complete on the spectacular Arawhiti Pua Ngahere viaduct.

The 75-metre long viaduct passes through a mature kauri forest and is sure to be a favourite feature for future road users.

The forest has posed some unique challenges for our structures team.

Using a 450-tonne mobile crane (the largest in New Zealand) they needed to lift 39 beams, working from both the north and the south and carefully manoeuvring the beams to avoid the nearby trees.

BUSY IN THE NORTH

The northern end of the project is getting busier as we progress with Pukerito (the Northern Connection) as well as prepare for the installation of beams of Woodcocks Road Bridge

There will be road closures and traffic management in the area while we install the beams in March. We will keep you informed of this work and how it may impact those travelling through as we get closer to the time.

Some of the other work underway in the north includes:

Matakana Link Road intersection:

- Preparation works
- Stage 1 of SH1 northbound widening works
- Stage 2 of southbound and median works
- Stage 3 of SH1 final completion works

SH1 north of Kaipara Flats Road and Goatley Road intersection:

- Retaining wall works
- Earthworks
- Pavement works



What's that you're building?

One of the more frequent questions we are being asked by the local community is the purpose of the building being constructed on State Highway 1 at the northern end of our project.

This is our Asset Management and Maintenance (AM&M) building.

As you know, the Ara Tūhono – Pūhoi to Warkworth project is a Public Private Partnership between Waka Kotahi NZ Transport Agency and the Northern Express Group (NX2).

Under the partnership, NX2 has contracted a joint venture of Higgins and Acciona who will carry out asset management and maintenance on the motorway for 25 years following its

opening in mid-May 2022.

Essentially this means that the motorway will be operated and maintained from the AM&M facility.

Its location near the roundabout at Pukerito (the Northern Connection) will ensure the team has easy access to the motorway.

The building has also been designed to a high standard so it can function as a Civil Defence emergency base in case of any natural disaster.

We're expecting the building to be complete later this year to allow the testing and commissioning of the control systems that will operate on the motorway.



Road layout changes near Johnstones Hill Tunnels

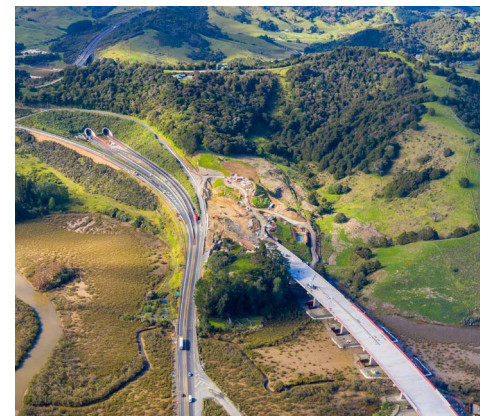
From this week, there is a new road layout for traffic north of the Johnstone Hill Tunnels. Realignment of the northbound lane means traffic will be running adjacent to the southbound side of SH1.

The changes are part of a staged sequence of work to seamlessly connect SH1 to the new motorway. They ensure crews have a safe working area while they progress the works at the northern end of the tunnels which will eventually connect it to the new motorway.

Stakeholder survey underway

We work hard to keep stakeholders and the local community up to date about the Ara Tūhono – Pūhoi to Warkworth project, and we're keen to get your feedback on how we're doing.

Our latest stakeholder satisfaction survey is live now and will be open until Friday 5 March. All responses will go in the draw to win a \$50 Countdown voucher. Follow this link to take part: <https://www.surveymonkey.com/r/DPLWVMS>



Driving on Ōkahu

We're currently planning to open part of the motorway a little earlier than the rest, with motorists expected to start travelling on Arawhiti ki Ōkahu (the viaduct over Ōkahu Inlet) from later this year.

As part of our work to connect State Highway 1 to the new motorway at the southern end of the project, northbound motorists will exit the tunnels and drive onto the viaduct, continue along a short section of the new motorway and then re-join State Highway 1 at Pūhoi (before the second large viaduct, Arawhiti ki Pūhoi).

Southbound motorists will drive the same route in reverse, entering the new alignment near the southern end of Arawhiti ki Pūhoi.

We're currently planning for this to happen towards the end of 2021, and we will ensure everyone is well informed of the changes before it goes ahead.

Our latest progress photos

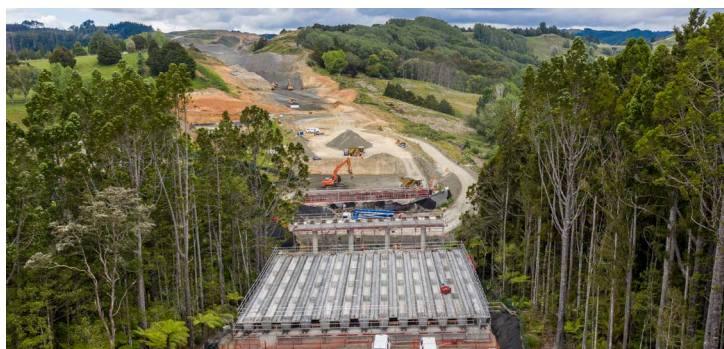


Road surfacing

As our new road takes shape, work is ramping up for our team taking care of the road surface. They've been placing the first layers of what will eventually make up the actual road that motorists will drive on. These images show basecourse being placed along the new alignment between Wyllie Road and the new Woodcocks Road Bridge under construction. This basecourse will be covered with a layer of asphalt.



Trenching machine in action.



Beam installation underway on Arawhiti Pua Ngahere.



Stabilising the subgrade improvement layer.



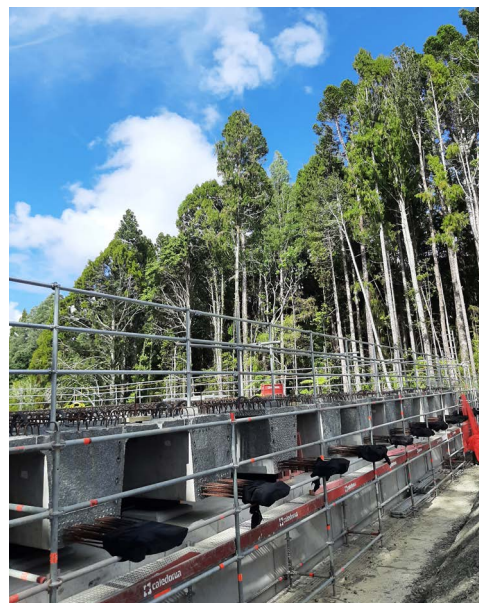
Trimming of rock batters.



Longitudinal drainage at Tapuwae o Kahumatamomoe.



Looking north along the new alignment.



Super T beams in place at Arawhiti Pua Ngahere.



Texas handrails installed on Arawhiti ki Ōkahu.



Completed farm access and batter stabilisation in the north of the project.

If you do not wish to receive any further newsletters, please [unsubscribe here](#)

A copy of our privacy policy and how we look after the information you provide us is available on our website: www.nx2group.com

E. info@nx2group.com P. 0508 P2WK INFO [f](#) Ara-Tūhono-Pūhoi-to-Warkworth