

CONSTRUCTION UPDATE

Connecting people and places

Our gifted name, Ara Tūhono, means connecting pathway and reflects the safer, more reliable and resilient connection the new motorway will provide for people travelling between Auckland and Northland. As we bring the new connection to life, you can expect to see increased activity at both ends of the project as we work to link into the current State Highway 1.

You can find out more about this important work in this update and on our website here:

<https://nx2group.com/about-puhoi-to-warkworth>

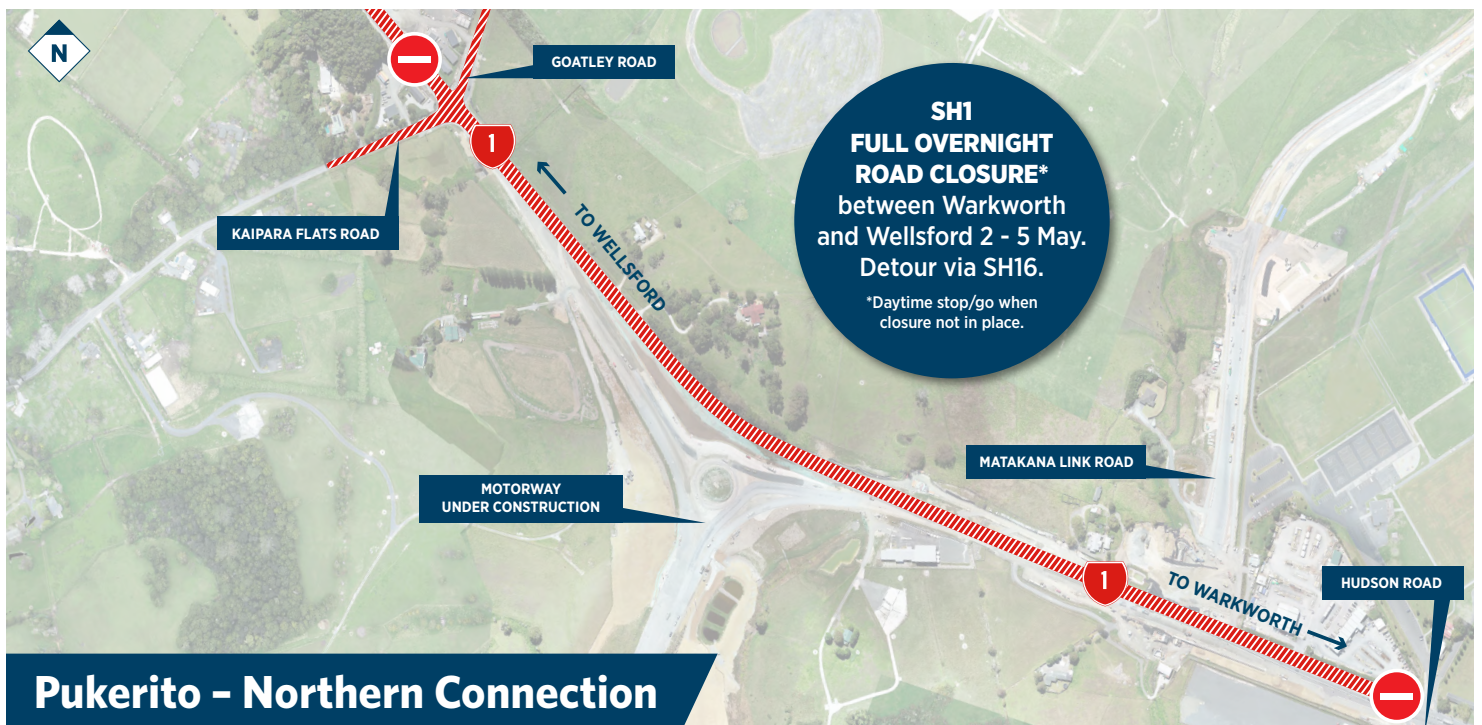


Plan ahead for work at Pukerito – Northern Connection

It's a busy time in the north as the team progress works at Pukerito (Northern Connection). Once complete, this connection will play an important role in enabling the flow of people, goods and services throughout the area.

Next month, the project will be undertaking pavement improvement

and tie in works on SH1 between Kaipara Flats Road/Goatley Road and Hudson Road intersections. A section of SH1 will be closed when this happens to ensure the safety of our teams working at night, and all other road users. During the day the area will also have a stop/go operation in place to keep crews safe while doing their work, and to prevent damage to vehicles and the new road seal.



Pukerito – Northern Connection

The works will be carried out during the following times:

Daytime works – stop/go and lower speed limit in place:

- Monday 2 May to Friday 6 May between 5am and 9pm

Overnight full closure – detour in place:

- Monday 2 May to Thursday 5 May between 9pm and 5am

When the full overnight closures are in place, there will be a detour between Warkworth and Wellsford via State Highway 16. The detour could add approximately 30 minutes travel time to your journey. Please plan travel over this time carefully, and we apologise in advance for any inconvenience.

While we will try to limit disruption to traffic flows, road users should plan ahead by checking the Waka Kotahi journey planner <https://www.journeys.nzta.govt.nz/> before heading out.

State Highway 1 journeys

Three weeks later, on the morning of **Monday 13 June 2022**, northbound and southbound SH1 traffic will also move to the new motorway. Northbound motorists will drive onto the viaduct immediately after exiting the Johnstones Hill Tunnels, while south-bound motorists will enter the new motorway at the Pūhoi on-ramp (Map below).

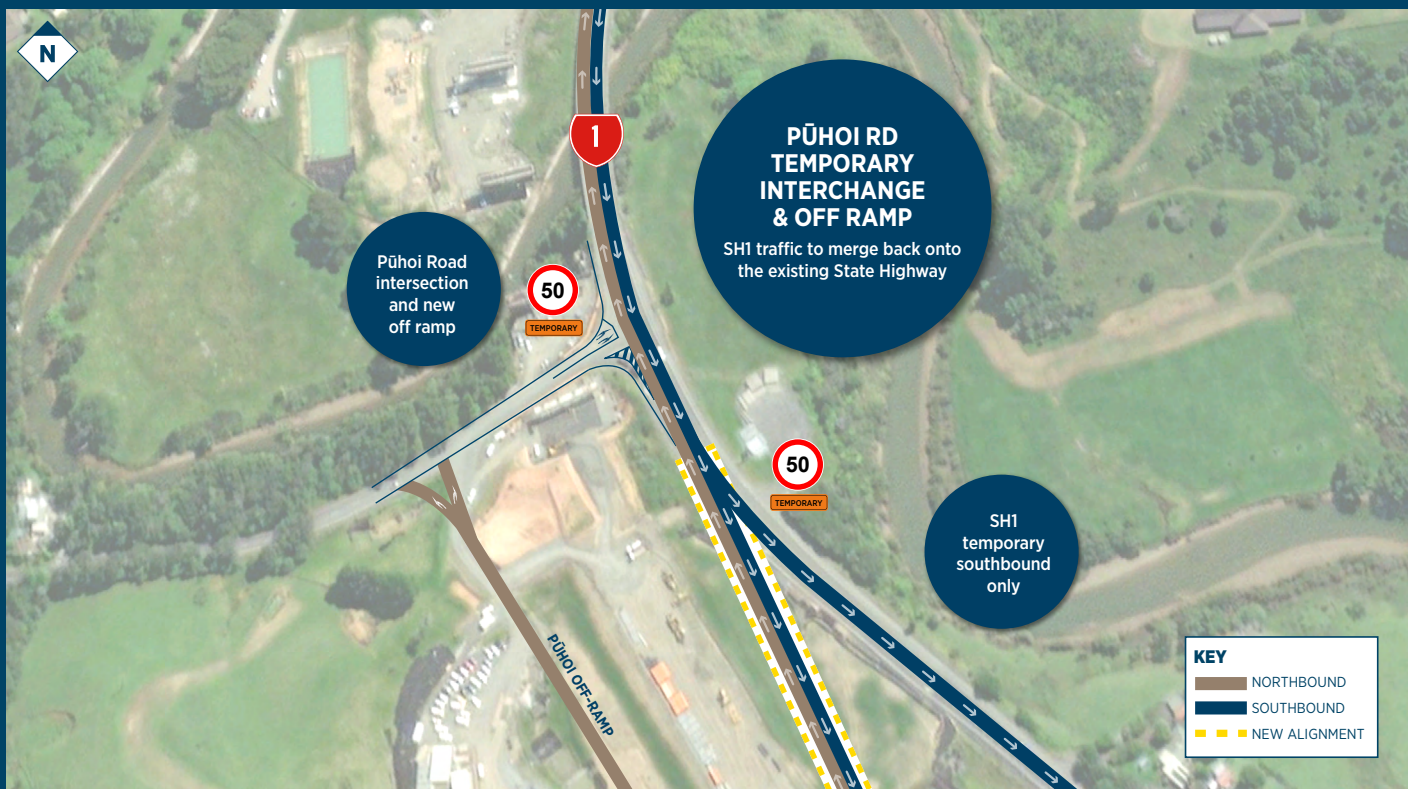
The road layout change will be formed over a period of three weeks, with several night works required during this time.

Safety is our highest priority, and a reduced speed limit of 50km/h will be in place at the Pūhoi Intersection, for the duration of these works. The temporary speed limit along the new alignment will be 60 km/h. The free route along Hibiscus Coast Highway will always be accessible.

Pūhoi Intersection view

Solid brown line: Northbound traffic merge back onto SH1, via temporary bi-directional on-ramp

Solid blue line: Southbound traffic merge onto the new on-ramp towards the tunnels or head towards Waiwera/HCH (free route)



We want to hear from you

We work hard to keep stakeholders and the local community up to date about the Ara Tūhono – Pūhoi to Warkworth project, and we're keen to get your feedback on how we're doing.

Our latest stakeholder satisfaction survey is live now and will be open until Friday 29 April.

All responses will go in the draw to win a \$50 Countdown voucher. Follow [this link](#) to take part.

What have we been up to?

If you want to take a closer look behind the scenes,

[click here](#)

to view the latest project progress photos.

If you do not wish to receive any further newsletters, please [unsubscribe here](#)

A copy of our privacy policy and how we look after the information you provide us is available on our website: www.nx2group.com

E. info@nx2group.com P. 0508 P2WK INFO [f](#) Ara-Tūhono-Pūhoi-to-Warkworth