

Works Notification

Road Layout Changes on SH1 near Johnstones Hill Tunnels Southern Connection – Stage 2

Work is beginning on an important piece of work within the Ara Tūhono – Pūhoi to Warkworth Motorway Project requiring significant road layout changes.

What is happening at the Southern Connection?

The Southern Connection works involve a four-stage construction sequence to connect State Highway 1 (SH1) north of the Johnstones Hill Tunnels to the new motorway. The works will enable the widening of SH1 north of the tunnels where it will eventually connect to the section of new motorway still under construction.

When will the work happen?

For the past couple of years, we've been building the new alignment alongside SH1. Now we're working to bring the two together. From Sunday 20 September there will be night time lane closures and road layout changes on SH1 near the Johnstones Hill Tunnels.

Safety is our highest priority and the reduced speed limit of 60km/h will remain in place for the duration of the works. While we will try to limit disruption to traffic flows, road users should plan ahead and allow more time for their journey.

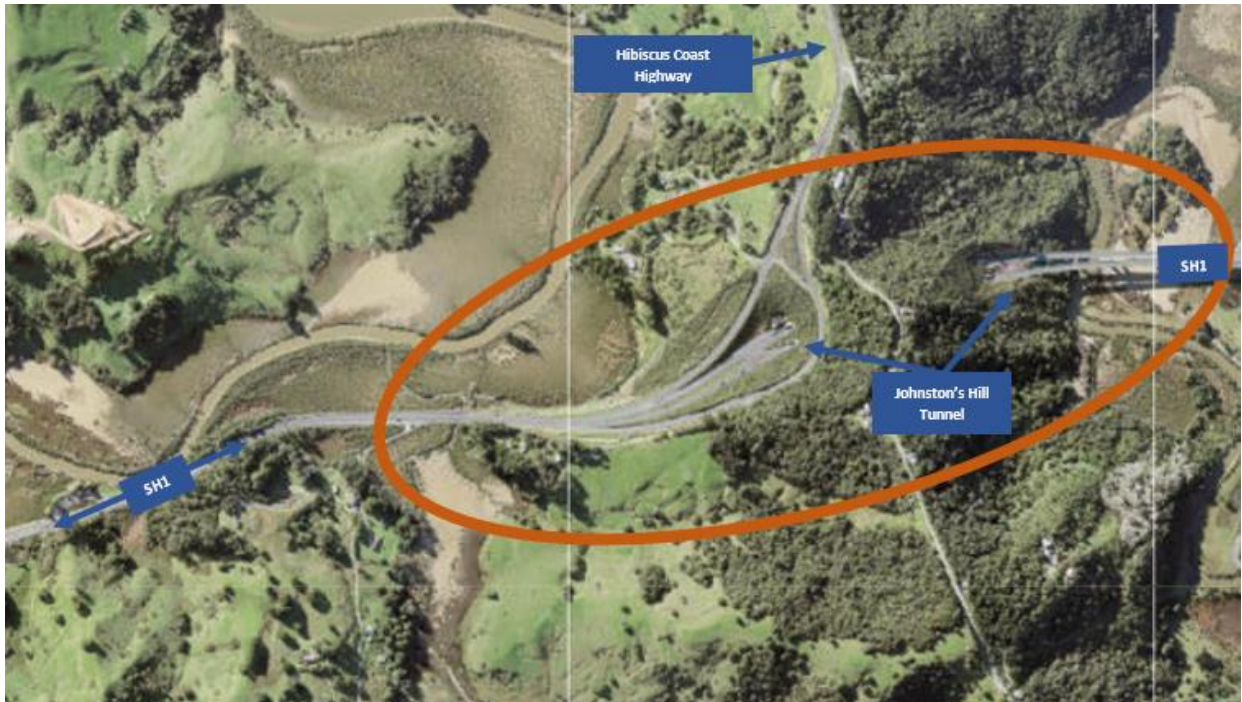
What does this mean for you?

We ask that drivers keep to the temporary speed limit for the safety of our work crews and road users, drive to the conditions and don't be distracted by work activity.

Thank you for your patience and support while we complete this important work. To help plan for peak time travel, visit the Waka Kotahi NZ Transport Agency journey planner at www.journeys.nzta.govt.nz.

The new four-lane motorway will provide increased safety, more consistent travel times and create a robust and reliable transport connection between Auckland and Northland.

Works Notification



Orange shows Road layout changes location – Traffic management in place

Work specific details

From Sunday 20 September to Thursday 01 October (not including Friday and Saturday nights) the northbound tunnel will be closed at night to enable works to happen. Stop/go traffic management will be in place from 8.00pm to 5.00am during this time to allow vehicles to pass.

On the night of Wednesday 30 September, Waka Kotahi NZ Transport Agency advises that overnight maintenance works are scheduled to take place overnight on the SH1) both northbound and southbound between Silverdale and Pūhoi. The double tunnel closure will take place from 9.00pm to 5.00am, detours via Hibiscus Coast Highway will be in place. The Ara Tūhono – Pūhoi to Warkworth team will utilise this overnight closure to install temporary barriers on SH1 (north of the Johnstones Hill Tunnels), these barriers will remain in place for the next 12 months.

Please don't hesitate to contact our communications team via email: info@nx2group.com or our 24/7 freephone: 0508 P2WK INFO (0508 7295 4636) if you have any questions.

Works Notification

More information on the Southern Connection work can be found by visiting our website <https://nx2group.com/> and our Ara Tūhono - Pūhoi to Warkworth Facebook page.

Warm regards,

Stakeholder & Communications Team
Fletcher/Acciona Joint Venture, on behalf of NX2

