

CONSTRUCTION UPDATE

Earthworks Season

The beginning of October is a big time for the project, signalling the start of our first earthworks season.

At its core this is an earthworks project with the equivalent of 4,800 Olympic sized swimming pools of earth to be moved.

During this first season we are aiming to complete 20% of the required earthworks.

- 7 million cubic meters of cuts
- 5 million cubic meters of fill
- 1.5 million cubic meters of rock to be excavated.

Please remember that this is a construction site with many hazards and not suitable for the public to enter, this includes driving into site access points. If you would like to know more about the project please visit our information centre at 45 Wyllie road.

Official opening hours are:

Tuesday: 1pm – 4pm

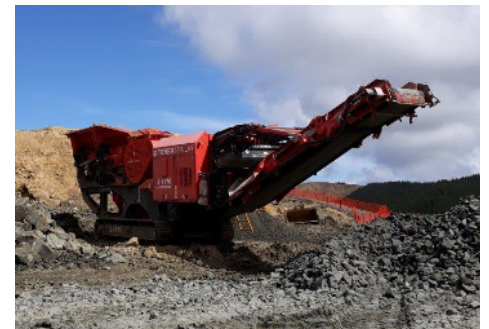
Thursday: 9am – 12pm

First Saturday of the month:
 10am – 1pm



Rock Crusher ‘Terex-Finlay Jaw crusher’

In our last update we mentioned the trial rock-blasts which occurred during July. The next step of the process is extracting and crushing the rock. This requires a 54,000kg rock crusher affectionately known as ‘Terex’. Having this machine on site means we will be able to reduce our deliveries of rock from other sources by up to 21,000 truck and trailer units over the next four years.



Stakeholder Satisfaction Survey – thank you!

Thank you to those who completed our first customer satisfaction survey.

We have reviewed the feedback from the survey along with some more in-depth interviews with key stakeholders. Overall the feedback we received was positive along with areas for improvement which included using less acronyms and looking into more interactive ways of presenting information.

When asked if there was anything the project team could do better one respondent replied “No, keep up the good work and go as fast as you (safely) can!”

The main message we heard through all feedback is that to date we are doing ok, however key to our success is ensuring we keep our standards high as the project progresses.

This was our first survey, keep an eye out in December for our first next customer satisfaction survey.

Gone fishing

The team have been busy keeping the local fish life safe over the last few weeks. Across the project there are many streams and creeks which are home to some of our treasured native fish species. To ensure they are kept safe during construction the affected waterways are fished using a technique known as electric fishing.

Electric fishing is a method which allows safe movement of fish into their new homes. The current temporarily stuns the fish, which float to the surface. They are scooped up in nets and moved to their new homes unharmed.



Did you know?

There are over 50 freshwater fish species in New Zealand, at least 35 of these are native to New Zealand and 14 are found within the Auckland Region.

Erosion sediment control

With the wet weather over the past few months managing erosion and sediment run off has been a high priority. We have made a commitment to control sediment in danger of being washed away by rain to mitigate any potential effects on the freshwater and marine environments of the Mahurangi and Pūhoi Rivers and their tributaries.

HOW DO WE DO IT

The project team will use a number of sediment control devices to help protect waterways near the construction site. These devices include silt fences, decanting earth bunds (ridge of compacted earth designed to hold dirty water) and sediment ponds (designed to catch soil that has been disturbed following heavy rain). Erosion control, or reducing the amount of sediment on site, will reduce the risk to waterways in and around the project boundary. Erosion control is about reducing the movement of soil caused by rainfall and water runoff. Laying down hay and geotextile at earthworks sites is a common form of erosion control to help prevent soil movement caused by rain.



RAIN,
RAIN & MORE
RAIN

From 1st March to 31st August (6 months) we've had 1300mm of rainfall, a typical cumulative total for the equivalent 6 months is 837mm.

Meet the Stakeholder and Communications Team

Those of you who have seen us at an event or popped into the information centre in the past few months will recognise our wonderful Stakeholder and Communications Team.

The team is responsible for managing communications about the project through this newsletter, local newspapers, media releases, works notification letters, community liaison meetings and engagement with local schools.



JOCELYN

Jocelyn has been on the project since November 2016. Before Pūhoi to Warkworth she worked on the Waterview Tunnel project. Jocelyn is the manager of the team and brings a wealth of knowledge and experience to the project.



DEBORAH

Deb joined the project at the beginning of the year, returning home after working for Transport For London in the UK. Deb looks after the Northern section of the project providing a link between the project and the local community.



NICOLA

Nicola is the newest member of the team, having joined in May from Auckland Transport. Nicola looks after the Southern end of the project from Moir Hill Road to the tunnels.

Quick Bites

Wyllie Road Proposed Realignment; During September, we have been running drop in sessions with affected landowners about the proposed realignment of Wyllie road.

Te Wiki o Te Reo Māori on site; the project team embraced Maori Language week with daily emails from Alan Orange – Project Director with words of the day and pronunciation videos.

Moir Hill Construction Yard ULDSP; In July we consulted with local residents on the Urban Landscape Design and Sector Plan for the Moir Hill Construction Yard. We received great feedback on the plan which we took on board and influenced the final design. To view the final Moir Hill Construction Yard ULDSP and further information on this process visit our website www.nx2group.com/ULDSP

Project Timeline

JANUARY 2017

Start of enabling works

OCTOBER 2017

Start of bulk earthworks

JANUARY 2018

Start of structures

NOVEMBER 2019

Start of pavement works

NOVEMBER 2020

Earthworks completed

OCTOBER 2020

Structures completed

SEPTEMBER 2021

Pavements completed

OCTOBER 2021

Works completed

LATE 2021

Motorway open to traffic

If you don't want to receive any further newsletters, please [unsubscribe here](#)

To find out more about how we use your information, please visit our website: www.nx2group.com

E. info@nx2group.com P. 0508 P2WK INFO